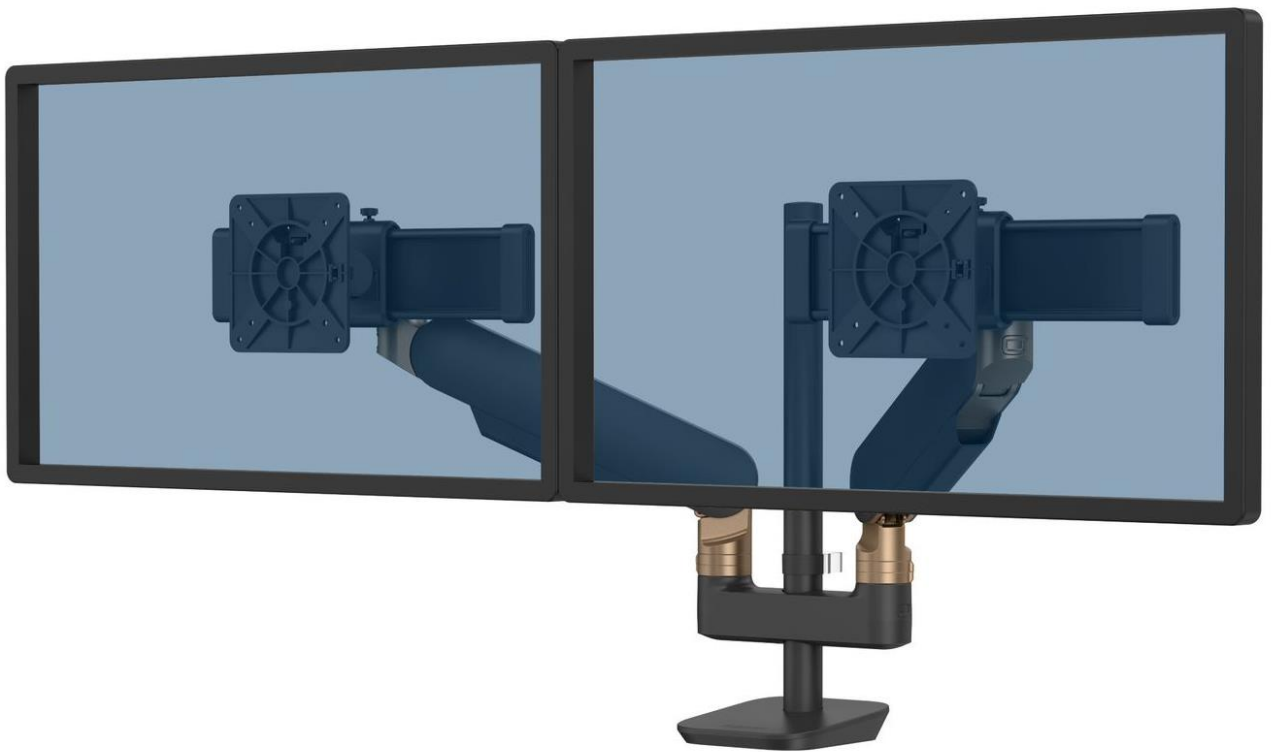


Fellowes

Let your
productivity flow



RisingEx™

2MS Monitor Arm

2MS Monitor Arm

Features:

- Our most versatile monitor arms combining sophisticated design and custom colour options
- Dynamic gas spring movement helping you to reduce eye, neck and back strain and work in comfort
- SnapKinect™ system for quick assembly and ultimate flexibility
- Revolutionary RotationStop™ to easily lock arm rotation
- Independently tested to meet ergonomic requirements outlined in European Health and Safety Legislation: EN ISO 9241-5
- Holds one screen weighing 2 – 12.7 kg and up to 40"



Specification:

Code	100043444	100043445	100043446	100043447	100043448	100036389	100038333	100038335	100038334
Finish	Standard			Premium		In-Trend*			
Colour	Black	Designer White	Platinum	Black & Bronze	Polished Aluminium & Designer White	Azure*	Sage*	Slate*	Stardust*
RAL / Pantone	9004	9003 & 9006	9006 & P8401C	9004 & P8004C	9003 & Aluminium	P10267C & P10262C	P10310C & P10102C	P8481C & P8180C	P8002C & P8401C
Product Dimensions (H x W x D)	400 x 1042 x 140 mm								
Product Weight	7.39 kg								
Outer Carton Dimensions (H x W x D)	315 x 585 x 250 mm								
Outer Carton Weight	8.69 kg								
Dynamic Height Adjustability	298 mm								
Height Adjustment Range	97 – 709 mm								
Reach Range	128 – 402 mm								
Rotation	± 90° (180°)								
Pan	± 90° (180°)								
Tilt	+45°/-30° (75°)								
Arm Swivel	360° with RotationStop™ Lock out (14 distinct locations)								
Tension Adjustment	Yes								
VESA	75 x 75 / 100 x 100 quick release plate								
Clamp: Desk Thickness	4 – 51 mm								
Grommet: Desk Thickness	10 – 76 mm								
Grommet: Diameter	12 – 76 mm								
Weight Capacity (kg)	2 – 12.7 kg per arm								
Maximum Monitor Size	40" (101.6cm) diagonally / 99.2 (W) x 141.2 cm (H)								
Outer Carton Barcode (SCS)	10043859798695	10043859798701	10043859798718	10043859798725	10043859798732	10043859797544	10043859797773	10043859797780	10043859797803
Quantity per Outer Carton	1								
Country of Origin	Taiwan								
Warranty	15 years limited								

* 12 week lead time. Minimum order quantities apply.



Ergonomic viewing

Maintaining a comfortable viewing height for your monitor reduces strain on your neck and eyes.



Finishes

Choose between Standard, In-Trend and Premium finishes – all carefully curated to enhance your space.



No-hassle assembly and configuration

SnapKinect™ connection system allows the arm to be assembled and installed in 3 easy steps – so you can get to work faster than ever.



Ultimate flexibility

RotationStop™ — a revolutionary new feature that enables you to adjust your monitor swing between 14 distinct stop points. Designed to protect people and equipment,

Ergonomic Working:

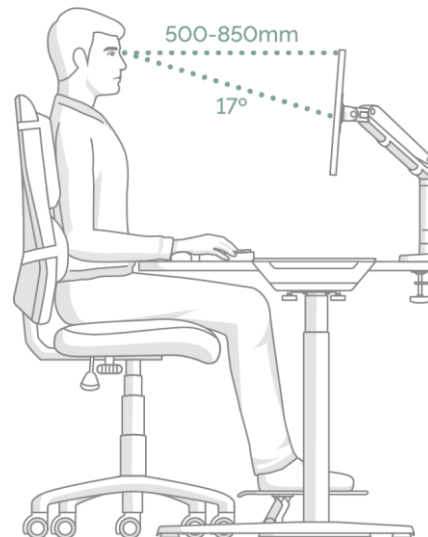


ZONE 3 RELIEVE NECK STRAIN

Achieve comfortable viewing.
Ensure your eyes are in line with
the top of your screen.

How to use a monitor arm

- 1. Arms Reach:** Whether sitting or standing check that your monitor is positioned so you can touch the screen with your fingertips and that you can easily read what is on your screen without straining.
- 2. Eye level:** Adjust the monitor arm until the top of your monitor/s are roughly level with your eyes.
- 3. Tilt:** Tilting the screen slightly upwards can help achieve a more neutral posture and reduce glare.
- 4. Multiple screens:** If you're using more than one monitor make sure:
 - The tops of each screen are level and positioned side by side;
 - You sit in the middle or in front of your main screen to reduce twisting and turning.



Certifications:

Ergonomic Excellence by Fira International

EN ISO 9241-5 1999 Ergonomic requirements for office work with visual display terminals (VDT's): part 5: 1999, workstation layout and postural requirements.

ANSI / BIFMA x5.5 – 2014 Desk/Table Products. Clause 22, 23, 24.



CAD Files:

.dwg CAD files available to download from pCon Catalog

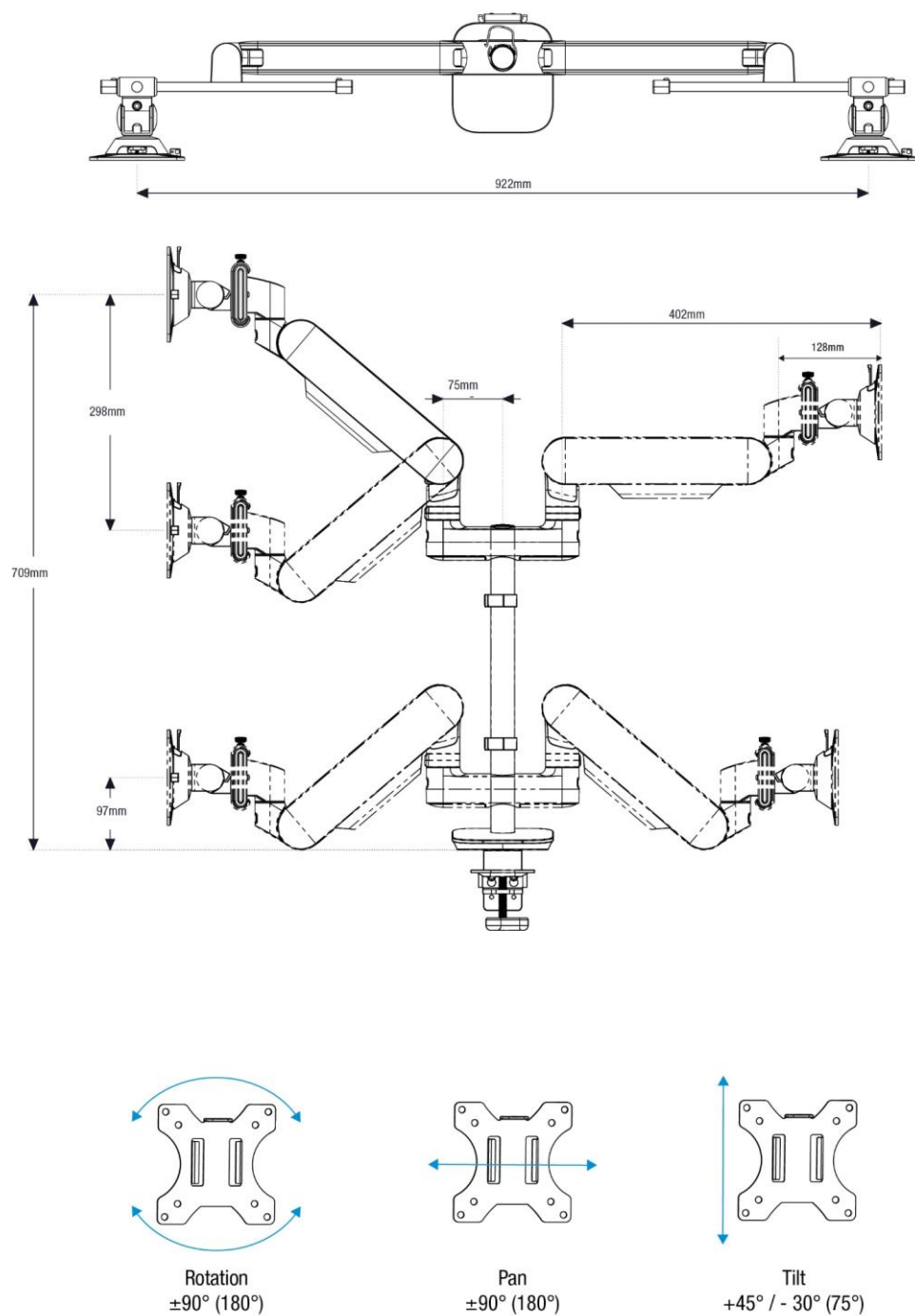
OFML data available on all pCon platforms



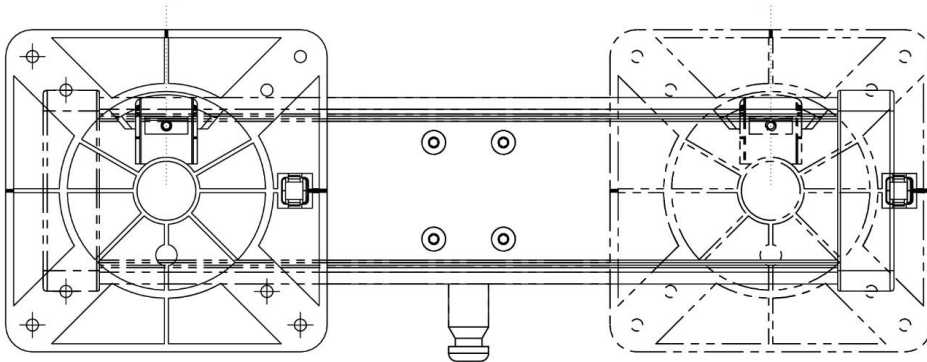
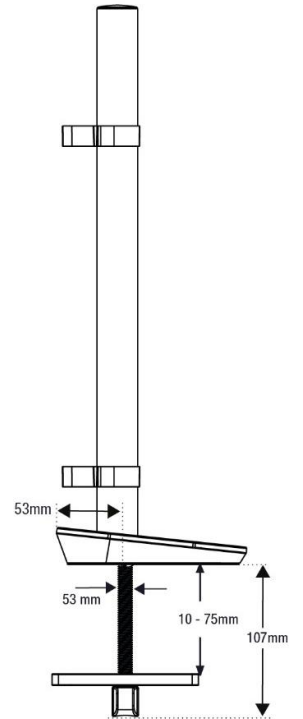
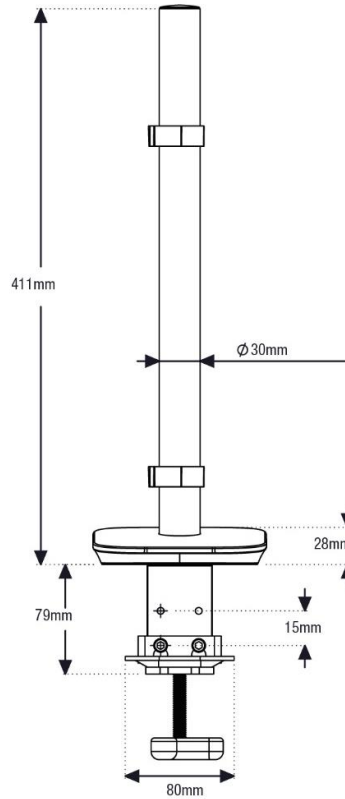
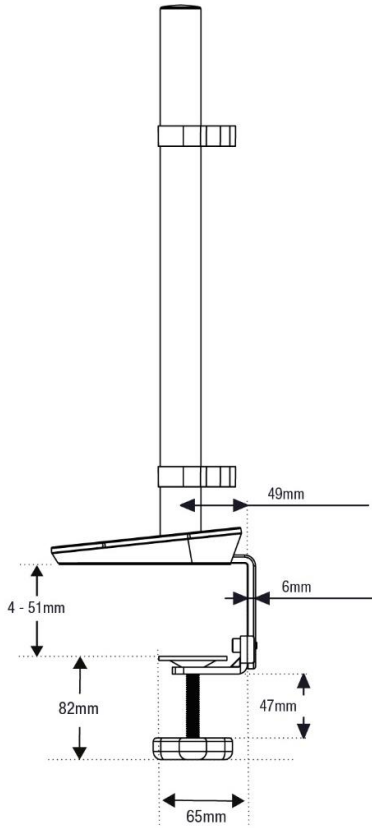
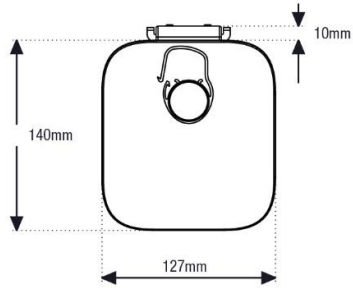
Aftercare:

- Servicing:** Check joint parts regularly to make sure the screws have not loosened.
- Spare Parts:** Available. Contact CS-UK@Fellowes.com or telephone 00800 18101810.
- Cleaning:** Wipe over with a damp microfibre cloth. Do not use any cleaning solutions.
- Handling & Storage:** Read and follow all instructions and warnings before use. This product is intended for indoor use only.

Dimensional Drawings:



RISINGEX™ 2MS Monitor Arm



Every effort has been made to ensure that information provided in this document is up to date and accurate. However, Fellowes cannot guarantee and assumes no legal liability or responsibility for the accuracy or completeness of the information provide. In case of any query please contact us as www.Fellowes.com/locations.