

Fellowes



Swing

Single Monitor Arm

Swing Single Monitor Arm

Features

- Single Swing Monitor Arm is powered by a heavy-duty gas spring
- Suitable for screens up to 18kgs, and 49" curved screens
- Easily installed via top mount or grommet mount
- Monitor can swivel on a 180° axis
- Screen attaches to a VESA plate, with semi-quick-release
- Built-in cable management effectively manages cables
- Optional the Swing's base can be equipped with USB-A &-C ports/cables (set sold separately 100136994)
- Built to last with full 5-year warranty



Specifications

Code Fellowes	100091675
Code Filex	809125
Colour	Black
Product Dimensions (H x W x D)	120 x 510 x 620mm
Product Weight	3.95 kg
Outer Carton Dimension (H x W x D)	430 x 285 x 140 mm
Outer Carton Weight	4.85 kg
Height Adjustment Range	255 - 450 mm
Reach Range	70 - 460 mm
Rotation	± 180°
Pan	± 90° (180°)
Tilt	± 45° (90°)
Arm Swivel	90°
Tension Adjustment	Yes
VESA	75 x 75 / 100 x 100 quick release plate
Top mount Clamp: Desk Thickness	10 - 45 mm
Grommet: Desk Thickness	10 - 45 mm
Grommet: Diameter	12 - 76 mm
Weight Capacity (kg)	1 - 18 kg
Weight Capacity (kg) Curved Screen	1 - 14 kg
Maximum Monitor Size	49" diagonally
EAN code	8719747102091
Quantity per Outer Carton	1
Country of Origin	China
Warranty	5 years limited

Swing Single Monitor Arm

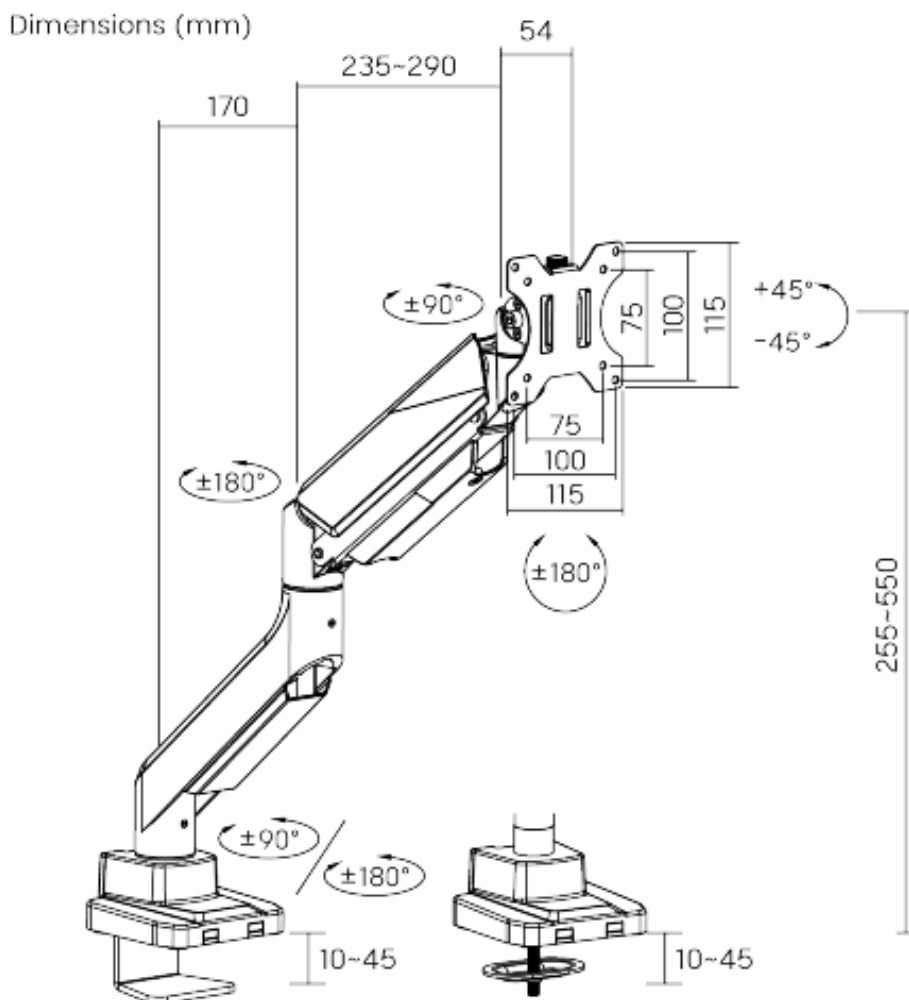
CAD Files

.dwg CAD files available to download from pCon Catalog/pCon.Box

OFML data available on all pCon platforms



Dimensional Drawings



Every effort has been made to ensure that information provided in this document is up to date and accurate. However, Fellowes cannot guarantee and assumes no legal liability or responsibility for the accuracy or completeness of the information provided. In case of any query please contact us as www.Fellowes.com/locations.

Swing Single Monitor Arm

Images



Every effort has been made to ensure that information provided in this document is up to date and accurate. However, Fellowes cannot guarantee and assumes no legal liability or responsibility for the accuracy or completeness of the information provided. In case of any query please contact us at www.Fellowes.com/locations.